

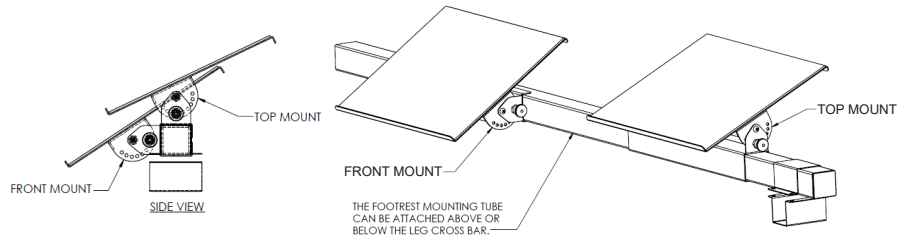
**ADJUSTABLE FOOTREST:** Do not remove components from cartons prior to assembly. Use the packing list to locate components. Keep hardware kits in labeled packaging until ready to use.

## HARDWARE INCLUDED

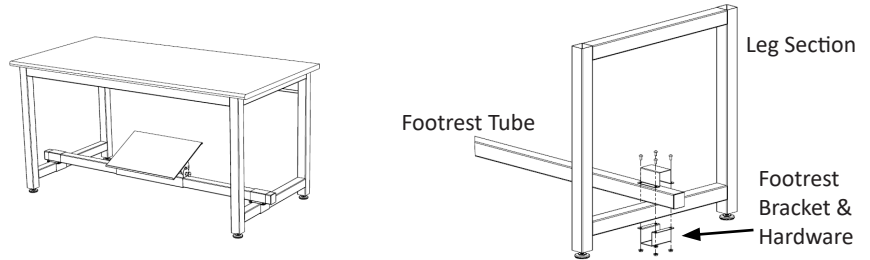
### KIT-11

1/4-20 X 1/2" RHMS (8)

1/4-20 Flange Nuts (8)



**POSITIONING OPTIONS:** The Adjustable Footrest can be mounted in 2 positions on the footrest tube, either facing front or facing up.



**TO LEG SECTIONS:** Slide the adjustable footrest onto the footrest tube. Mount the footrest tube to the lower crossbar (the tube can be mounted either above or below the crossbar) of leg sections using brackets and hardware from KIT-11.