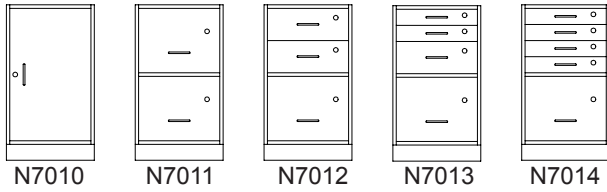
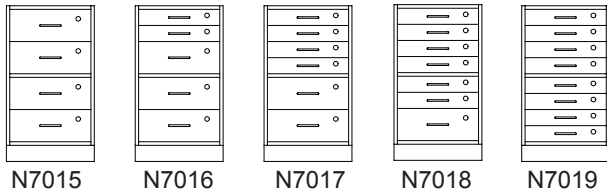


## 24"D x 30"H\*

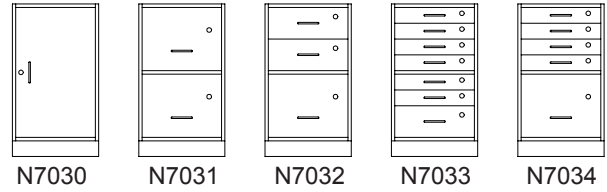


N7010 N7011 N7012 N7013 N7014



N7015 N7016 N7017 N7018 N7019

## 30"D x 30"H\*

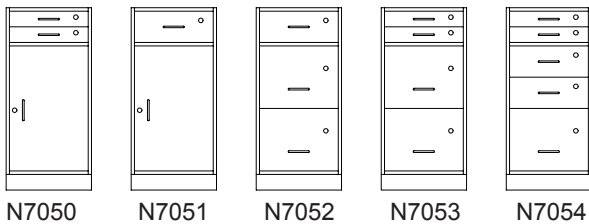


N7030 N7031 N7032 N7033 N7034

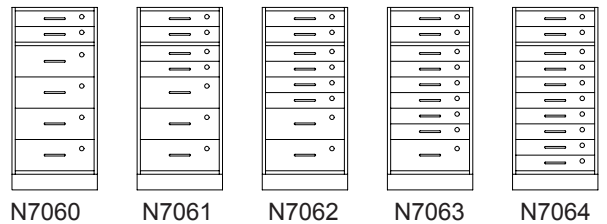


N7035 N7036 N7037 N7038 N7039

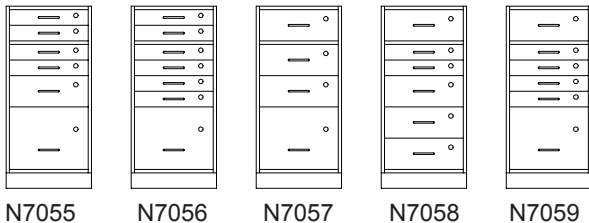
## 30"D x 36"H\*



N7050 N7051 N7052 N7053 N7054



N7060 N7061 N7062 N7063 N7064



N7055 N7056 N7057 N7058 N7059

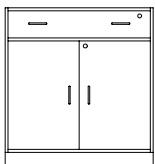


N7065 N7066 N7067 N7068 N7069

\*Workheights based on selection of 1-1/8" thick worksurface

## Double Cabinet Configurations

For Workstations of 30" Depth x 36" Height or  
 Workstations of 24" Depth x 36" Height



N7095  
 N7095-02

### Cabinet Drawer Dimensions

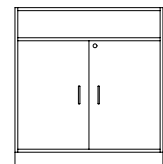
Small Drawer: 2-13/16" x 13-3/4" W (I.D.)

Medium Drawer: 5-3/4" H x 13-3/4" W (I.D.)

Large Drawer: 11-5/8" H x 13-3/4" W (I.D.)

Depth (ID) of 23"D Cabinet is 20-1/2"

Depth (ID) of 29"D Cabinet is 26-1/2"



N7090  
 N7090-02

N7090 Includes one Drawer (26"D x 29-7/8"W x 4"H ID)

N7090-02 Designed for optional sink mount

Dimensions: 36"H x 32-3/4"W x 30"D

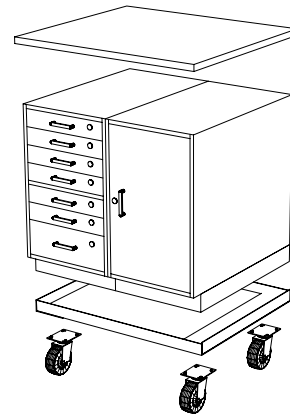
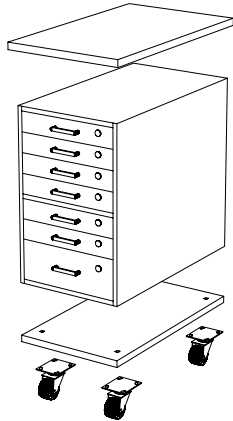
N7095 Includes one Drawer (26"D x 29-7/8"W x 4"H ID)

N7095-02 Designed for optional sink mount

Dimensions: 36"H x 32-3/4"W x 24"D

### MOBILE CABINET WORKSTATIONS

Any of our cabinets can be made mobile as a single, double or triple banked workstation by adding a cabinet base, casters and worksurface.



#### SINGLE MOBILE CABINET WITH BASE

32" Workheight\* with 30"H Cabinet & 3" Casters  
34" Workheight with 30"H Cabinet & 5" Casters

#### DOUBLE/TRIPLE MOBILE CABINET WITH BASE

34" Workheight with 30"H Cabinets & 3" Casters  
36" Workheight with 30"H Cabinets & 5" Casters

*\*Workheights based on selection of 1-1/8" thick worksurface*